



THE
HOME
GROUP



Chatsworth Road, Dartford, DA1 5AT
Guide price £210,000



Guide Price £210,000 - £225,000. A rarely available, modern one bedroom end of terrace house located in a residential road within a 10 minute walk of Dartford Station. The house has two garden areas to the front and side plus its own parking space directly in front of the property too. The enclosed porch leads into the living area which is open to the kitchen and has a large under stairs storage cupboard. Upstairs is a double bedroom with built in wardrobes and a modern bathroom. The property would suit first time buyers, those downsizing or rental investors.

Enclosed Porch

Living Room

14' x 10'6 (4.27m x 3.20m)

Kitchen

7'9 x 7' (2.36m x 2.13m)

Landing

Bedroom

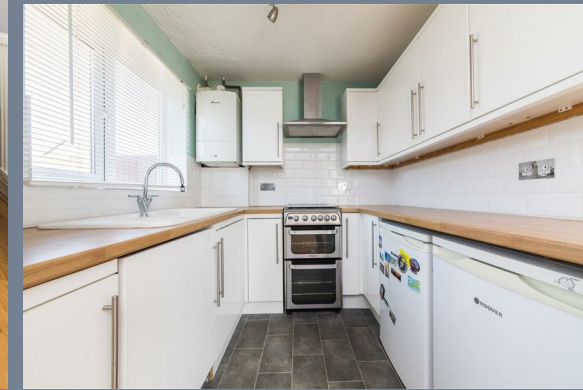
12'3 to wardrobes x 8'8 (3.73m to wardrobes x 2.64m)

Bathroom

8' x 7' (2.44m x 2.13m)

Gardens

Parking





Ground Floor

Approx. 22.5 sq. metres (242.4 sq. feet)

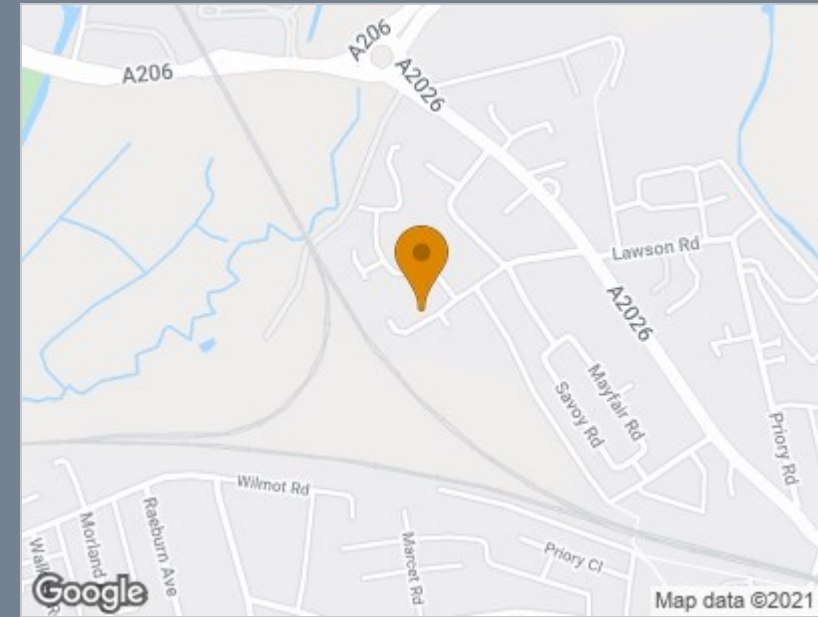


First Floor

Approx. 20.8 sq. metres (224.0 sq. feet)



Total area: approx. 43.3 sq. metres (466.4 sq. feet)



Energy Efficiency Rating		Current	Potential
Very energy efficient - lower running costs			
(92 plus) A			92
(81-91) B			
(69-80) C		72	
(55-68) D			
(39-54) E			
(21-38) F			
(1-20) G			
Not energy efficient - higher running costs			
England & Wales		EU Directive 2002/91/EC	

Viewing

Please contact our The Homes Group Office on 01322 532 889 if you wish to arrange a viewing appointment for this property or require further information.

These particulars, whilst believed to be accurate are set out as a general outline only for guidance and do not constitute any part of an offer or contract. Intending purchasers should not rely on them as statements of representation of fact, but must satisfy themselves by inspection or otherwise as to their accuracy. No person in this firm's employment has the authority to make or give any representation or warranty in respect of the property.